

INTEGRATED BRUSHLESS DRIVE



EtherCAT®

CANopen®

PROFI®
PROCESS FIELD BUS
BUS

• Caratteristiche hardware

Alimentazione:

560Vdc nominali (min. 310Vdc – max 750 Vdc)

Feedback:

Encoder incrementale, encoder assoluto, Sin-Cos, Resolver

I/O integrati:

4 IN digitali 24Vdc configurabili per:

PSTOP, NSTOP, Enable, Home, Capture, Step/Direction

3 OUT digitali 24Vdc 250mA

2 IN digitali 24Vdc o 1 OUT BTB

1 IN/OUT digitale 24Vdc con funzioni configurabili

3 IN/OUT differenziali configurabili per:

Encoder incrementale master o ingresso encoder assoluto

Uscita encoder emulato

PWM IN o OUT

RS485 ausiliaria

1 Analogue IN +/-10V

Interfaccia:

EtherCAT, CANopen, Profibus-DP, Modbus RS485Pulse/direction, $\pm 10V$

Sicurezza:

STO (incluso)

Protezione:

IP65

Opzioni:

Freno motore

• Caratteristiche funzionali

Caratteristiche integrate di movimento:

profile DS402, modalità interpolata, posizionamento, Ecam, homing, capture

Programmabilità interna secondo lo standard IEC61131, linguaggio ST

Protezione:

I2t, Sovraccarichi, corto-circuito, sovratemperatura, sovratensione

Accessori:

Cavo seriale per debugging

Alimentatore AC/DC 564Vdc

• Hardware features

Power supply:

Nominal 560Vdc (min 310Vdc max 750Vdc)

Feedback:

Incremental encoder, Absolute encoder, Sin-Cos, Resolver

On board I/O's:

4 digital IN 24Vdc general purpose, configurable as:

PSTOP, NSTOP, Enable, Home, Capture, Step/Direction

3 digital OUT 24Vdc 250mA, general purpose

2 digital IN 24Vdc or 1 BTB OUT

1 digital IN/OUT 24Vdc with configurable function

3 differential I/O's configurable as:

Master incremental encoder or Absolute encoder input

Encoder emulation output

PWM IN or OUT

Auxiliary RS485

1 Analogue IN +/-10V

Interface:

EtherCAT, CANopen, Profibus-DP, Modbus RS485Pulse/direction, $\pm 10V$

Safety:

STO (safe torque off)

Protection:

IP65

Option:

Internal brake

• Functional features

Integrated movement features:

device profile DS402, interpolated mode, positioning, extended gearing function, Ecam, homing, capture

Stand alone programmability according to the standard IEC61131, ST language

Protection:

I2t, Overload, Short circuit, Overtemperature, Overvoltage

Accessorie:

Serial interface cable debugging

Power Supply AC/DC 564Vdc

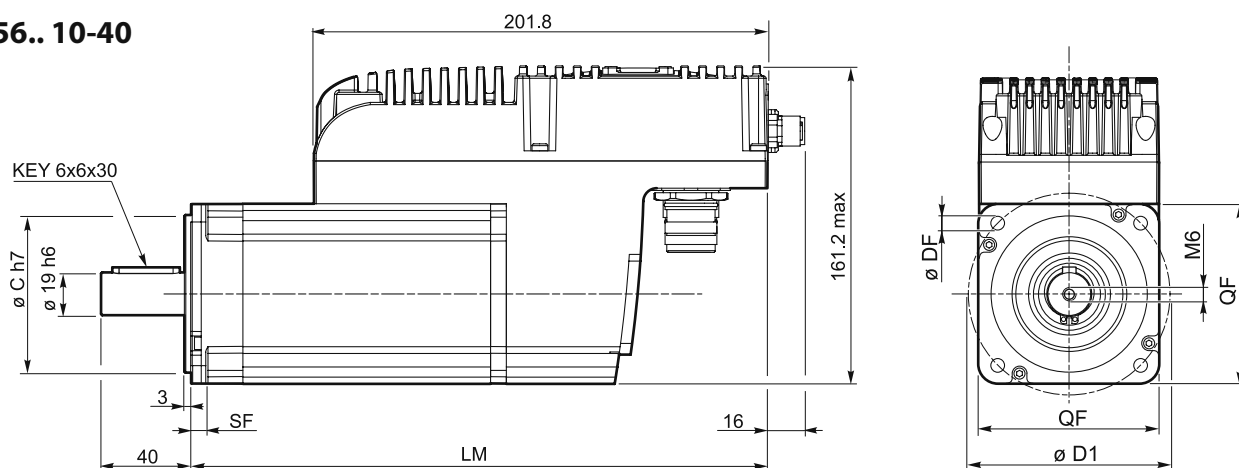
DESIGNAZIONE

ORDERING CODE

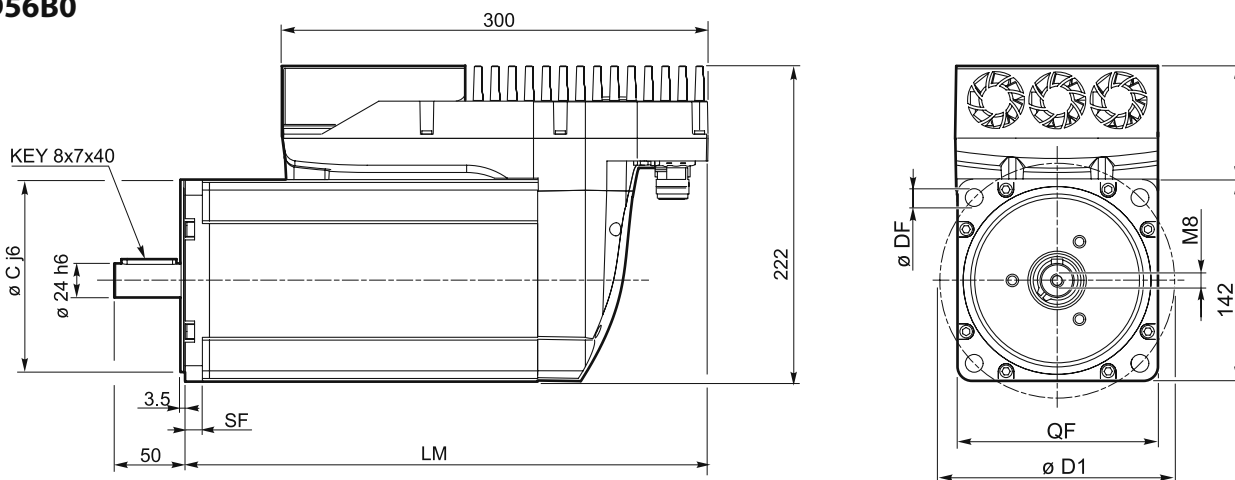
Tipo Type	Coppia di stallo Stall torque			Interfaccia Interface		Opzioni Options
IBD56	10	0	E0	CAN	0	0
IBD56	10 2.8 Nm	0 albero con chiavetta	E0 encoder incrementale 2000 I/G (encoder antivibrazione disponibile solo su richiesta) incremental encoder 2000 I/G (encoder anti-vibration available only on request)	CAN CanOpen DS402	0 Motore senza Freno Motor without brake	0 Riservato Reserved
	20 4.0 Nm	0 keyed shaft	E1 encoder incrementale 2000 I/G x flangia 80mm incremental encoder 2000 I/G x 80mm flange	SER Seriale ModBus RS485	1 Motore con Freno Motor with brake	
	30 5.6 Nm		E2 encoder incrementale 2000 I/G x flangia 100mm incremental encoder 2000 I/G x 100mm flange	PRO Profibus-DP (non disponibile) (not yet available)		
	A0 6.0 Nm		A0 encoder assoluto 4096 I/G (non disponibile) absolute encoder 4096 I/G (not yet available)	ETC EtherCAT (non disponibile) (not yet available)		
	40 8.0 Nm					
	B0 16.0 Nm					

DATI TECNICI
TECHNICAL FEATURES

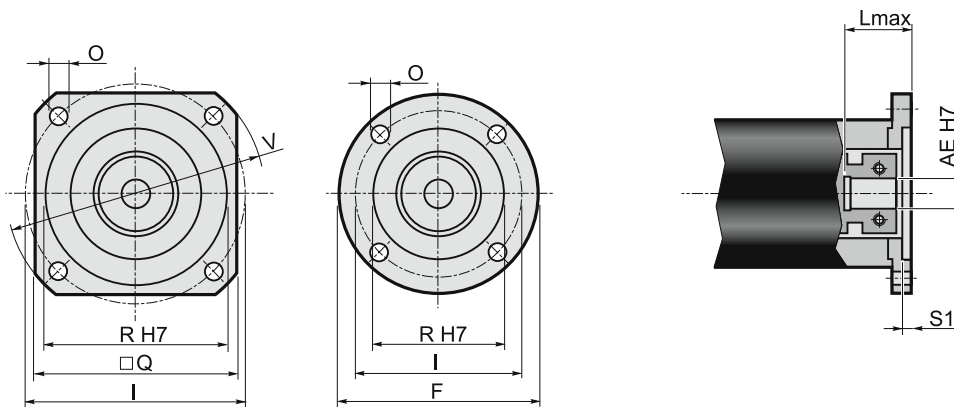
Tipo Type	Coppia di stallo Stall torque [Nm]	Coppia di picco Mpeak Peak Torque Mpeak [Nm]	Inertza Rotore Jm Rotor Inertia Jm [kgcm ²]	Velocità Vn Speed Vn [rpm]	Peso Weight [kg]	Peso con freno Weight with brake [kg]
IBD5610	2.8	8.4	1.16	3000	4	4.6
IBD5620	4	12	1.58	3000	6	6.6
IBD5630	5.6	22	2.8	3000	6.6	7.6
IBD56A0	6	22	2.8	3000	7.2	7.8
IBD5640	8	24	4.1	3000	8.3	9.3
IBD56B0	16	40	10.7	3000	16	18

DIMENSIONI
OVERALL DIMENSIONS
IBD56.. 10-40


Tipo Type	Coppia di stallo Stall torque [Nm]	LM		QF	C	ØDF	SF	ØD 1
		Senza freno Without Brake	Con freno With Brake					
IBD5610	2.8	249	291	80	70 h 7	6.5	7	90
IBD5620	4	277	319					
IBD5630	5.6	271	321	100	95 h 7	9	9	115
IBD56A0	6							
IBD5640	8	301	351					

IBD56B0


Tipo Type	Coppia di stallo Stall torque [Nm]	LM		QF	C	ØDF	SF	ØD 1
		Senza freno Without Brake	Con freno With Brake					
IBD56B0	16	218	248	142	130 j6	12.5	12	165

**Accoppiamenti motori Brushless con riduttori epicicloidali
REP - EP**
**Accoppiamenti motori Brushless con riduttori epicicloidali
REP - EP**


Brushless Integrated Drive	Coppia Torque	AE	Lmax	F/Q	I	R (H7)	O	S1	Tipo flangia Type flange								
									EP55	EP75	EP90	EP120	EP155	REP075	REP100	REP125	REP150
IBD5610	2.8	19	40	80	90	70	6.5	3	—	—	P12	P17	P15	—	P12	P17	P15
IBD5620	4	19	40	80	90	70	6.5	3	—	—	P12	P17	P15	—	P12	P17	P15
IBD5630	5.6	19	40	100	115	95	9	3	—	—	P07	P06	P03	—	P07	P06	P03
IBD5640	8	19	40	100	115	95	9	3	—	—	P07	P06	P03	—	P07	P06	P03